



We look forward to seeing you all at the October 4th meeting!



Bring your metal detector and join us at the October 4th meeting!!! Providing there is no snow cover we will put them to use.



Special points of interest:

- Metal Detecting Practice
- Chinese Auction
- Update the possibility of setting up a Pay to Pan operation.
- Conversion chart



Kenai Chapter

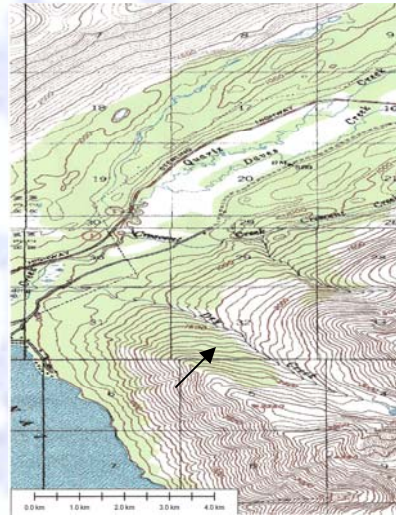
September 2007 Newsletter

WWW.GPAAKENAICHAPTER.COM

Possible Revenue For the Club!!

Possible Pay-to-Pan area to create revenue for the club

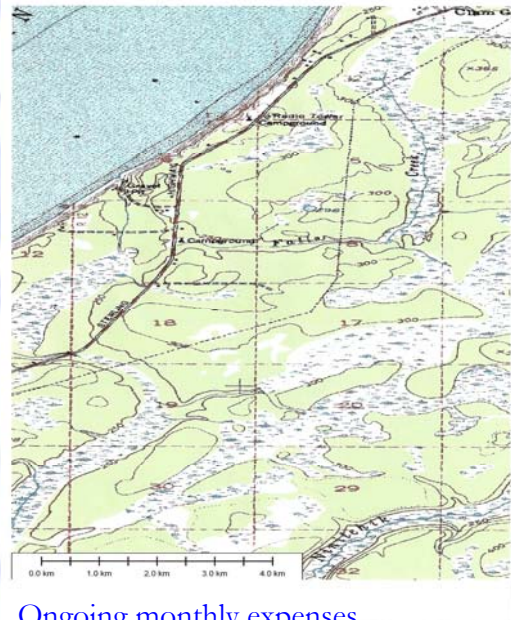
Joe Demaree, President reported that he and others had measured and staked the property we are looking at. Your officers are now working on the paperwork. It was emphasized again that this would take involvement from the members to get this going and to work it . To the side is a map of the area.



Claims Committee

Scott Adams was at the meeting and informed the members of the investigating he had done around Falls Creek.

Map of the area pictured.



Financial Report

Gary Dawkins was not able to be present so the secretary gave us a financial report.

In the past month we had \$0.00 income. Expenses in the amount of \$111.95 leaving us a balance of \$204.41.

Ongoing monthly expenses.

- Coffee \$10.00
- Stamps \$82.00
- Web page \$19.95

We would like to hold a **Chinese Auction!** These are always a lot of fun!!! If you have items you would like to contribute bring then to the meeting or contact Joe or Don. Several items have already been contributed. This is an excellent way to raise money for the club.

YOU ASKED FOR IT— YOU GOT IT

Conversion Chart

Multiply	x	By	=	To Obtain
Atmospheres	x	14.70	=	Pounds per square inch
Kilograms per square centimeter	x	14.23	=	Pounds per square inch
Pounds per square inch	x	0.07032	=	Kilograms per cm ²
Drams	x	1.772	=	Grams
Drams	x	0.0625	=	Ounces
Grains (Troy)	x	1	=	Grains (Avoirdupois)
Grains	x	0.0648	=	Grams
Grams	x	15.43	=	Grains
Grams	x	0.03527	=	Ounces
Kilograms	x	1000	=	Grams
Kilograms	x	2.205	=	Pounds
Ounces	x	16	=	Drams
Ounces	x	437.5	=	Grains
Ounces	x	0.0625	=	Pounds
Ounces	x	28.35	=	Grams
Pounds	x	7000	=	Grains
Pounds	x	453.6	=	Grams
Pounds	x	16	=	Ounces
Centimeters	x	0.3937	=	Inches
Centimeters	x	0.01	=	Meters
Centimeters	x	10	=	Millimeters
Inches	x	2.540	=	Centimeters
Meters	x	100	=	Centimeters
Meters	x	3.281	=	Feet
Meters	x	39.37	=	Inches
Meters	x	1.094	=	Yards
Feet per second	x	0.3048	=	Meters per second
Feet per second	x	0.6818	=	Miles per hour
Meters per second	x	3.281	=	Feet per second
Miles per hour	x	88	=	Feet per minute
Miles per hour	x	1.467	=	Feet per second
Liters	x	0.2642	=	Gallons
Liters	x	1.057	=	Quarts
Liters	x	1000	=	Milliliters
Square centimeters	x	0.1550	=	Square inches
Square inches	x	6.452	=	Square centimeters



**Remember -
Recreational panning
on lands that have
been withdrawn from
mineral entry is a
PRIVILEGE, take
care of it.**

Kenai Prospecting Club, Chapter of GPAA
c/o Becky Moore Secretary
PO Box 2583
Kenai, Alaska 99611-2583